



Smoke Curtain

Model 4000

 **Euro Systems®**
Design with Passion

Smoke curtain

Model 4000

System Description

Euro Systems Model 4000|perimeter (M4000)

is a code-compliant fire-rated assembly designed to function as a vertically deploying opening protective requiring no corner posts. This perimeter curtain may be configured in a closed, box-like, condition or in a multifaceted open-ended configuration with or without side-guide captures. The curtain panel angle may vary from +/- 90° (30° - 150°). The M4000 features fire-rated pleated curtain mounted within a steel housing. The curtain assembly can be equipped with an obstruction sensor in the bottom pan to detect impediments to the deploying screen. M4000 comes in a standard galvanized finish. RAL powder coat color options are available.

Codes and Standards

M4000 fulfills IBC requirements to provide an opening protective, where these assemblies are permitted as passive barriers used in conjunction with smoke control systems. This fire-rated curtain system can serve as opening protective certain applications in atrium, stairwell, and escalator construction

System Operation

The system is deployed upon a signal from the local smoke detection system or a smoke control panel. System power requirement is 120-volt AC. The unit is also equipped with a 24-volt DC battery back-up system that is maintained by the electronic controls. When required the system can also be connected to building standby power. The controls include a universal power supply that supports 230/240-volt operation.

Installation

The system is typically mounted above the ceiling. It anchors to a header above the ceiling assembly, supported from the deck above. If side guides are used, they are secured to the walls on either side of the opening. All Euro Systems units are to be installed by factory recognized installation personnel. Preparation work required by others is outlined in the product specification. Installation requires clear, plumb, unobstructed wall surfaces for mounting the side guides, 120v AC power and, should local smoke detection be required, a smoke detector.

Dimensions

- headbox: 19 3/8" deep by 9" high
- openings up to 15 feet in drop length and 200 linear feet wide

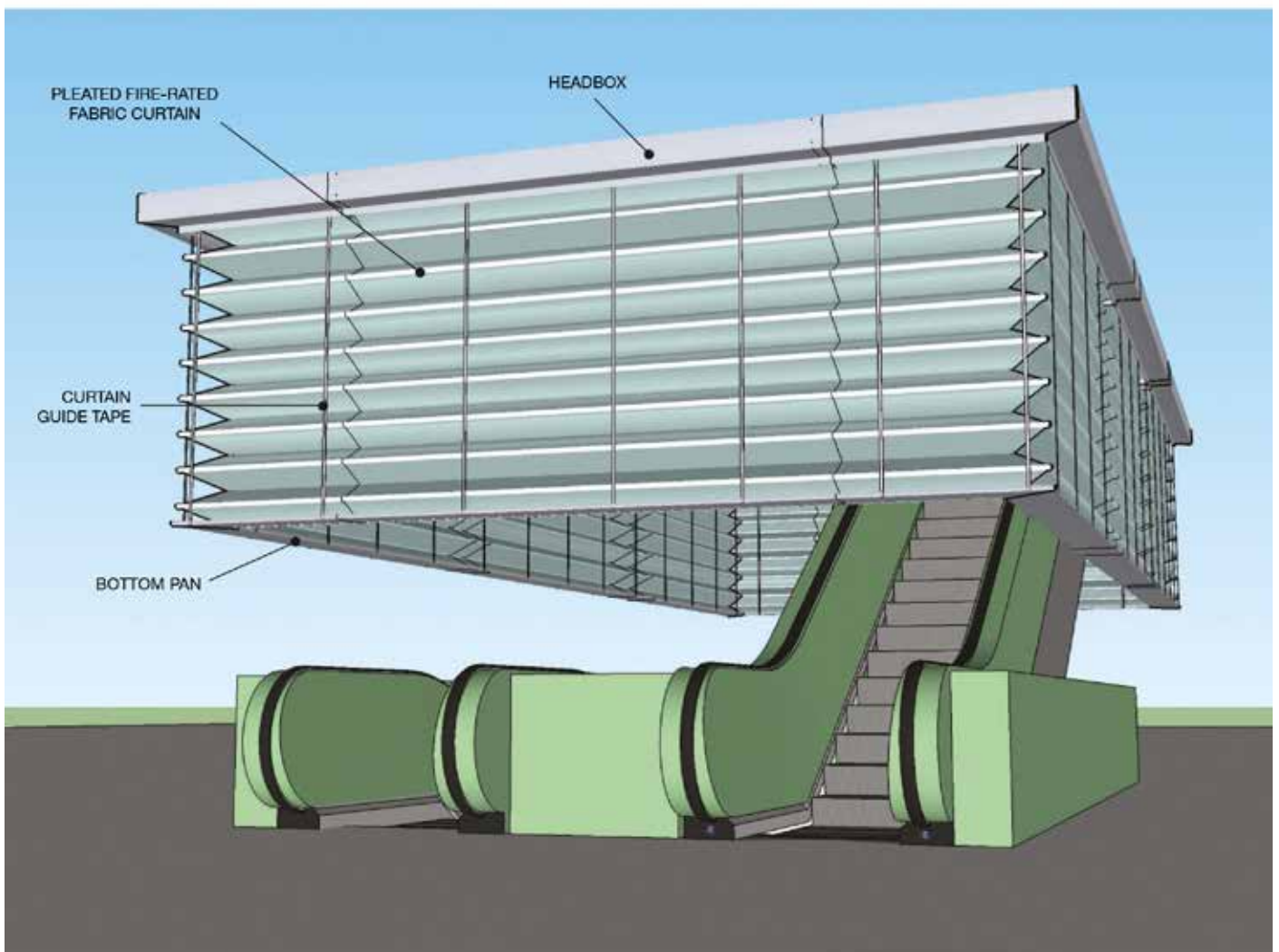
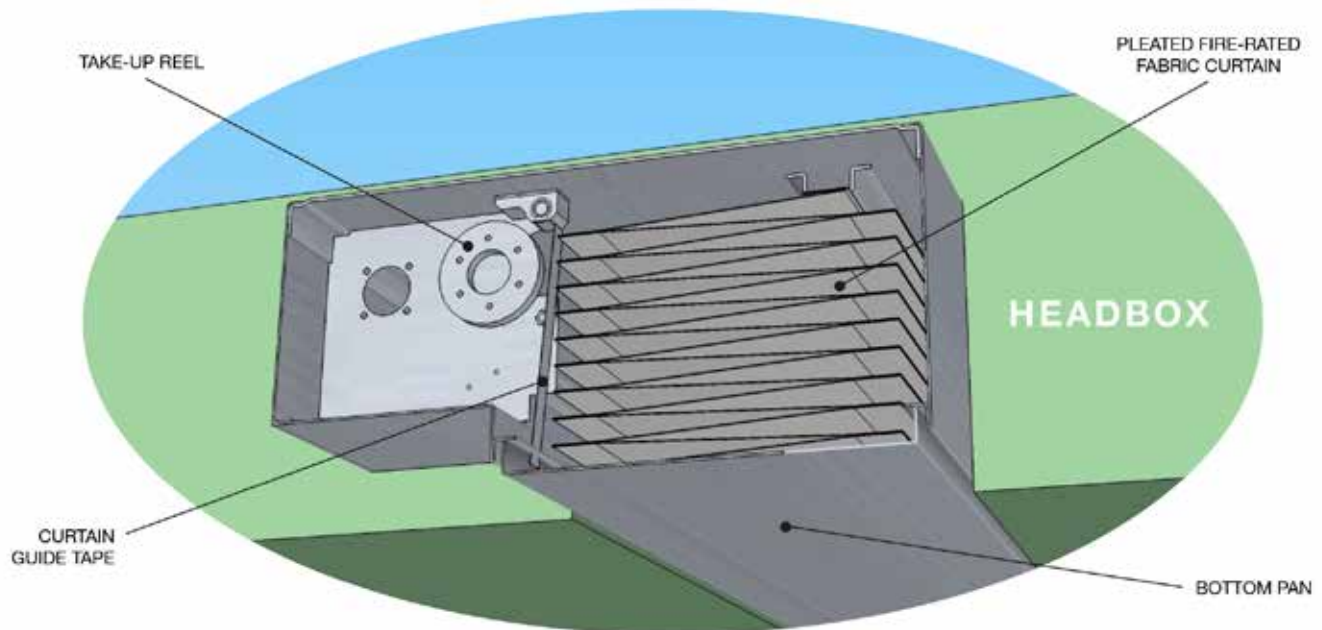
Standards

- UL 10B "Fire Tests of Door Assemblies" (20 min.) listed by Intertek
- UL 10C "Positive Pressure Fire Tests of Door Assemblies" (20 min.) listed by Intertek
- UL 10D "Fire Tests for Fire Protective Curtains" (up to 2 hr.) listed by Intertek
- UL 864 "Control Units for Fire Protective Signaling Systems" listed by Intertek
- NFPA 252 "Standard Methods of Fire Tests of Door Assemblies"
- ASTM E 84 Class A "Surface Burning Characteristics of Building Materials"



Smoke curtain

Model 4000





Scan code to view on
Smartphone or Tablet device

UNITED KINGDOM
Euro Systems UK Ltd.
Unit 11 Chancel Industrial park
Newhall Street, Willenhall
WV13 1NX
UK

info@eurosystems.co.uk
www.eurosystems.co.uk

Tel: +44 (0) 845 075 1050

 **Euro Systems®**
Design with Passion

